

STUDENT SPACE

SERVICES

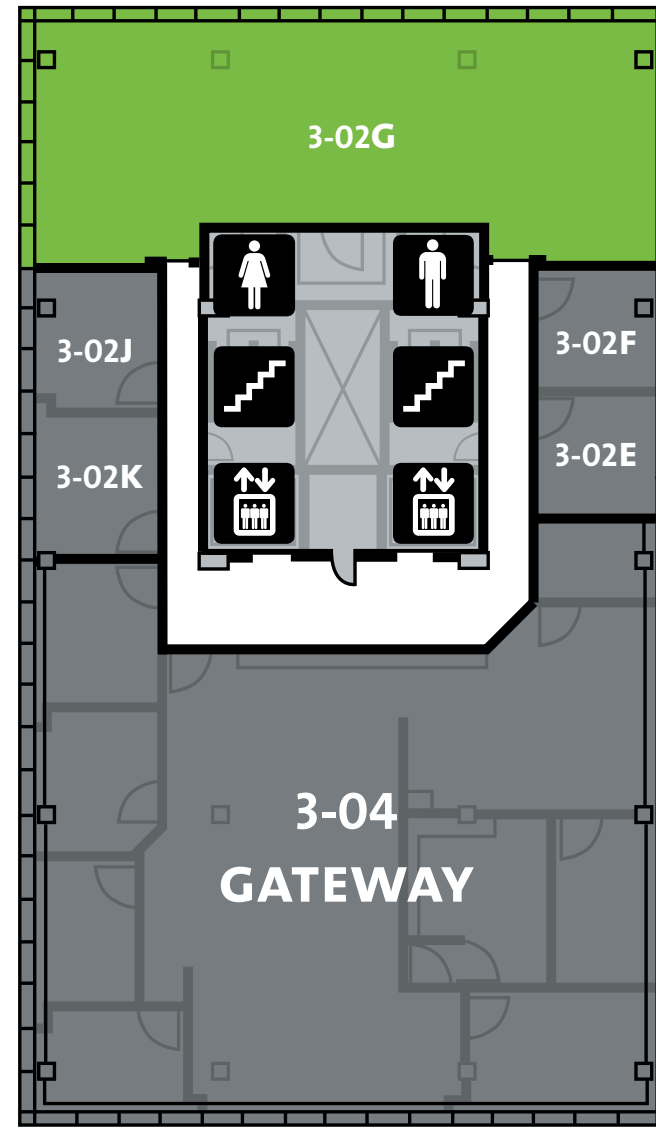
BUSINESSES

FOOD

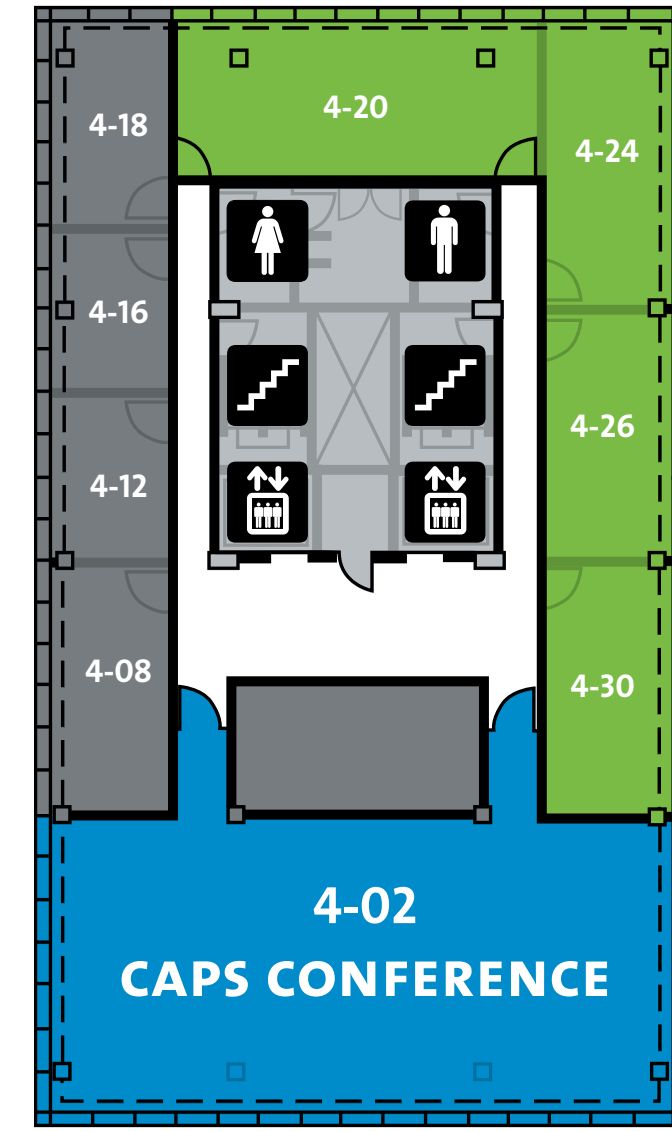
VENUES

OFFICES

LEVELS THREE - SEVEN

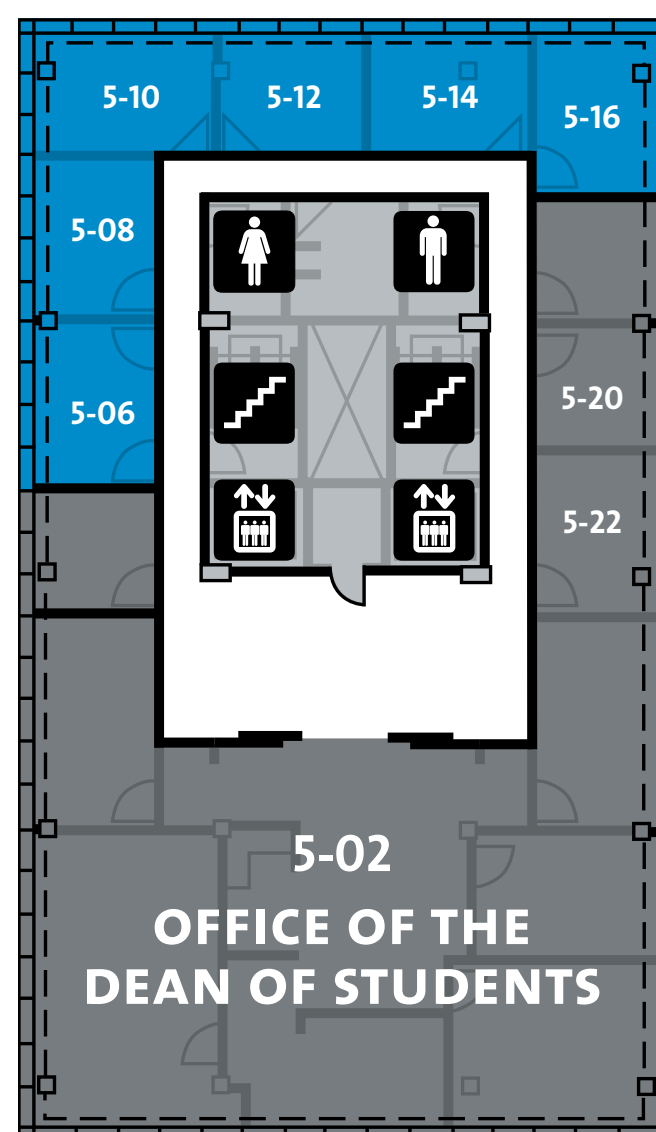


- 3-02E Technical Support
- 3-02F Technical Support
- 3-02G SU Conference Room
- 3-02J Elections Office
- 3-02K Elections Office
- 3-04 The Gateway

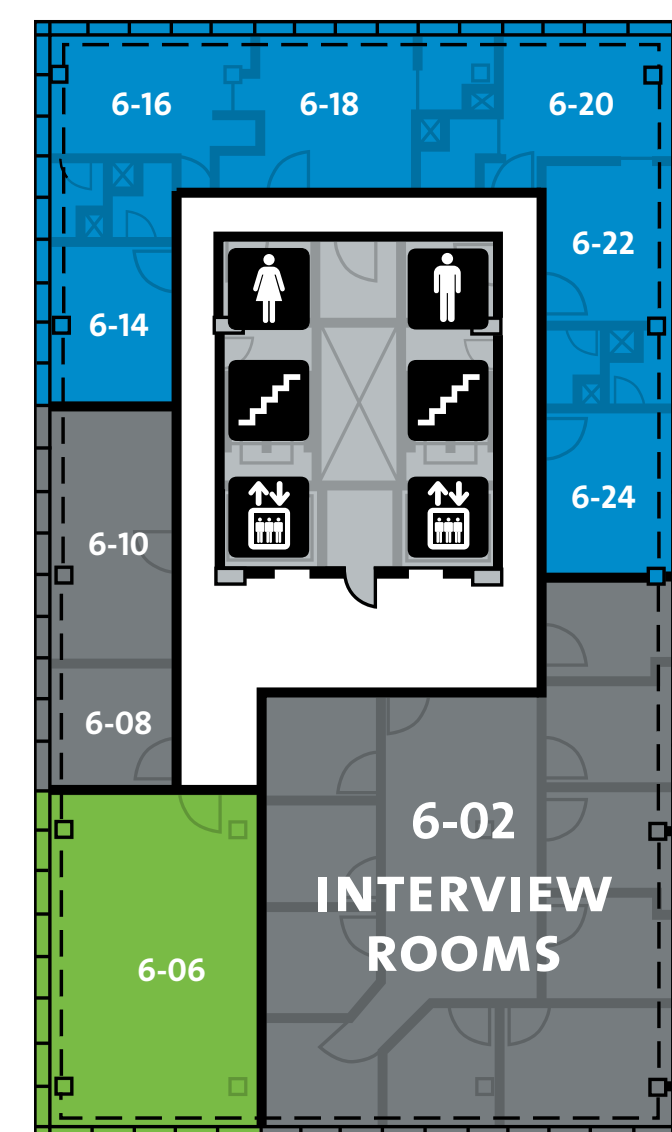


- 4-02 CAPS Conference Room
- 4-08 Office of the Dean of Students
- 4-12 Office of the Dean of Students
- 4-16 Women's Centre
- 4-18 Office of the Dean of Students
- 4-20 SU Conference Room
- 4-24 SU Conference Room
- 4-26 SU Conference Room
- 4-30 SU Conference Room

- Stairs
- Elevators
- Freight Elevators
- Washrooms
- Information
- Post Office
- Telephone
- Bank Machine
- Box Office



- 5-02 Office of the Dean of Students (DoS)
- 5-06 Student Ombudservice
- 5-08 Student Ombudservice
- 5-10 Student Ombudservice
- 5-12 Student Ombudservice
- 5-14 Student Ombudservice
- 5-16 Student Ombudservice
- 5-20 DoS Fresh Start Program
- 5-22 DoS Fresh Start Program



- 6-02 CAPS Interview Rooms
- 6-06 SU Conference Room
- 6-08 Office of the Dean of Students
- 6-10 Office of the Dean of Students
- 6-14 – 6-24 Student Groups Offices

